

FORM SEAT CUSHIONS



normann
COPENHAGEN

FOR PRODUCT INFORMATION, SWATCHES + ORDERING: HELLO@RYPEN.COM | 800.560.0554 | WWW.RYPEN.COM



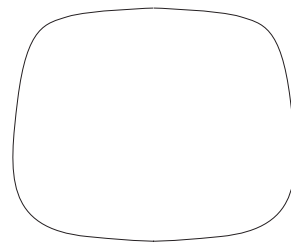
normann

C O P E N H A G E N

FOR PRODUCT INFORMATION, SWATCHES + ORDERING:
HELLO@RYPEN.COM | 800.560.0554 | WWW.RYPEN.COM



COLLECTION OVERVIEW



Form Seat Cushion
H: 1 x L: 46 x D: 39 cm

normann
C O P E N H A G E N

FOR PRODUCT INFORMATION, SWATCHES + ORDERING: HELLO@RYPEN.COM | 800.560.0554 | WWW.RYPEN.COM



normann
COPENHAGEN

FOR PRODUCT INFORMATION, SWATCHES + ORDERING: HELLO@RYPEN.COM | 800.560.0554 | WWW.RYPEN.COM



PRODUCT FACTS

Designer / Year Of Design

Simon Legald / 2016

Material

Camira Main Line Flax or Sørensens Leather Ultra on top, foam, and rubber fabric on backside.

Construction

The Form seat cushion is sewn with a non-slip backside, and a fabric or leather front.

Maintenance

Textile: Clean with textile or upholstery cleaner. Leather: Clean with a damp cloth. Use warm water with soap flakes. Frequent vacuuming with a soft fitting is recommended for both textile and leather to preserve color and appearance.



normann

C O P E N H A G E N

FOR PRODUCT INFORMATION, SWATCHES + ORDERING:
HELLO@RYPEN.COM | 800.560.0554 | WWW.RYPEN.COM

MATERIAL OPTIONS



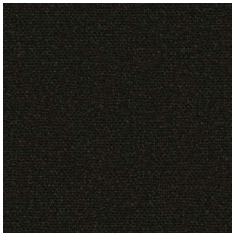
Upholstery Camira Main Line Flax



White MLF20



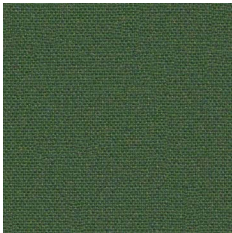
Grey MLF26



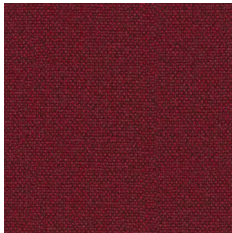
Black MLF28



Blue MLF36



Green MLF29



Red MLF14



Cream MLF60



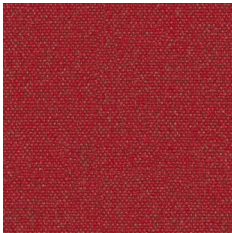
Warm Grey MLF61



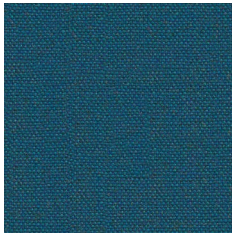
Light Grey MLF02



Brown MLF23



Bright Red MLF01

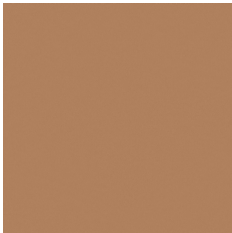


Bright Blue MLF05

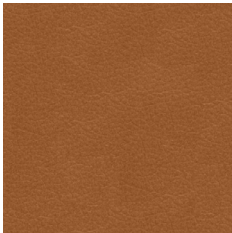
Upholstery Sørensen Leather Ultra



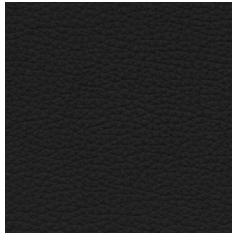
White



Camel



Brandy



Black

normann
C O P E N H A G E N

FOR PRODUCT INFORMATION, SWATCHES + ORDERING: HELLO@RYPEN.COM | 800.560.0554 | WWW.RYPEN.COM



normann

C O P E N H A G E N

FOR PRODUCT INFORMATION, SWATCHES + ORDERING: HELLO@RYPEN.COM | 800.560.0554 | WWW.RYPEN.COM